

DATE

Monday 29th June



**Halesowen C of E
Primary School**

YEAR GROUP

6

Choose 1 maths activity a day

Write the numbers between 20-40 in digits and words.	Can you order these fractions from smallest to largest? $\frac{2}{3}$, $\frac{7}{12}$, $\frac{3}{4}$, $\frac{3}{6}$	Complete the questions on page 2
--	--	----------------------------------

Choose 1 English activity a day

Look at the picture on page 3. Write a list of words to describe the road. Use a thesaurus to help.	Use similes/ metaphors to describe how the path moves across the landscape.	Write an opening paragraph for a story using the picture the next page to set the scene. You can use similes/ metaphors or personification to help.
---	---	---

Choose 1 topic activity a day

Complete the Viking alphabet challenge on page 4	Make your own timeline (see page 5)	Create your own fact file on what life was like for children in the Viking times.
--	-------------------------------------	---

Practise these skills everyday this week

Read aloud to someone in your house.	Practice your time table facts. You can use TTRS to help.	Practice your year group spellings -(See spelling frame website below)
--------------------------------------	---	--

Practise these skills as often as you can.

Food and drink skills Prepare/cook a meal . (Adult supervision)	Write up an essential shopping list to a certain budget. Use supermarket online sites to add prices.	Help to wash and fold the laundry.
--	---	------------------------------------

Useful website links for extending learning

<https://www.bbc.co.uk/bitesize/dailylessons>

<https://www.bbc.co.uk/bitesize/topics/ztyr9j6>

<https://spellingframe.co.uk/>

<https://www.thesaurus.com/>

Maths Questions

5a. Order the fractions below in ascending order.

$\frac{2}{3}$ $\frac{1}{2}$ $\frac{5}{6}$
 $\frac{5}{8}$ $\frac{3}{4}$

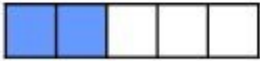

★ VF

5b. Order the fractions below in descending order.

$\frac{5}{8}$ $\frac{1}{4}$ $\frac{3}{10}$
 $\frac{2}{5}$ $\frac{1}{2}$



★ VF

6a. True or false? The fractions shown below are in descending order.


 $>$
 $\frac{5}{6}$
 $>$


★ VF

6b. True or false? The fractions shown below are in ascending order.

$\frac{2}{6}$
 $<$

 $<$


★ VF

7a. Match the digit cards to complete the statements below.

A. $\frac{\square}{6} < \frac{1}{5}$

B. $\frac{\square}{10} > \frac{4}{5}$

C. $\frac{1}{\square} = \frac{3}{6}$

Digit Cards

1 2 9

★ VF

7b. Match the digit cards to complete the statements below.

A. $\frac{4}{\square} > \frac{3}{4}$

B. $\frac{\square}{4} < \frac{2}{5}$

C. $\frac{4}{\square} = \frac{1}{2}$


Digit Cards

8 1 5

★ VF

8a. Alice says,

Cian and I both bought a bag of sweets each. I ate $\frac{5}{8}$ and he ate $\frac{7}{12}$ of the bag. I have more sweets left.




Alice

Is she correct?

★ VF

8b. Josh says,

Ruby and I both bought a bag of grapes each. I ate $\frac{5}{7}$ and she ate $\frac{3}{5}$ of the bag. I have fewer grapes left.



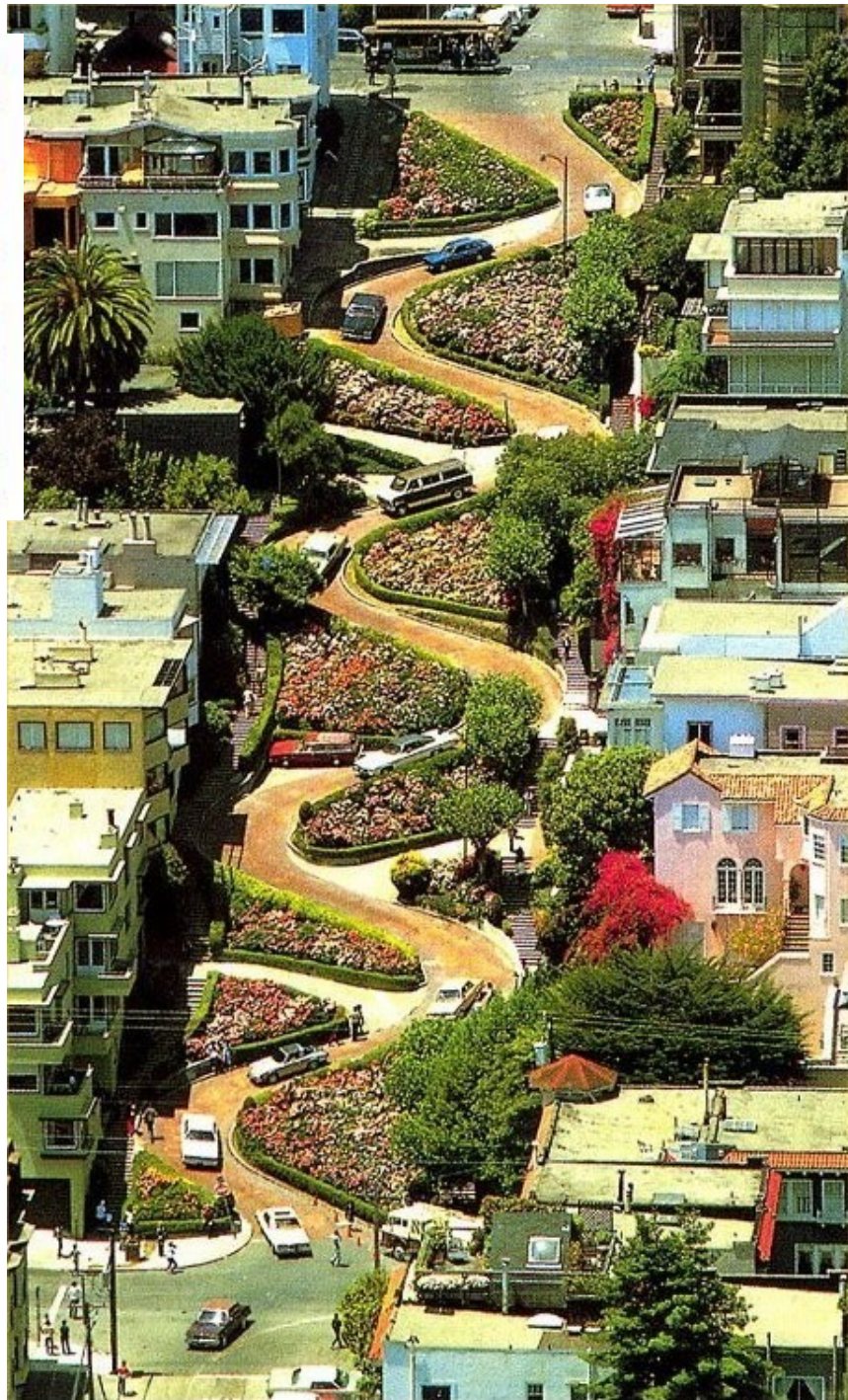
Josh

Is he correct?

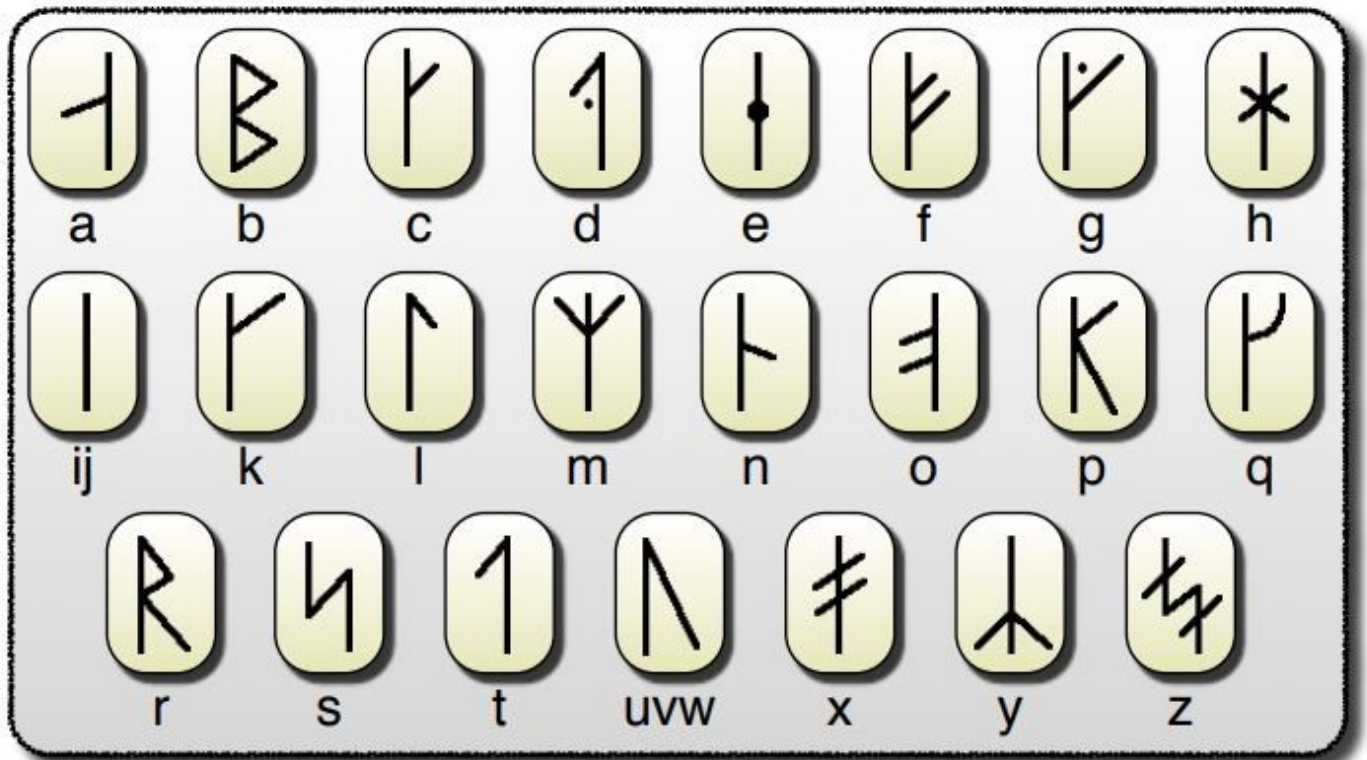
★ VF

English Writing Prompt

- F ○ Feeling
- A ○ Asking
- N ○ Noticing
- T ○ Touching
- A ○ Action
- S ○ Smelling
- T ○ Tasting
- I ○ Imagining
- C ○ Checking



Vikings alphabet challenge



Can you solve these secret messages using the Viking alphabet shown above?

Timeline Task

Cut out and make your own timeline.

Arrange each tab in order of the time period.

The last tab has been left blank for you to fill in with a time period and drawing.

Stone Age



Viking raids



Anglo-Saxon settlements



Roman Britain



Norman invasion



--	--

DATE

Tuesday 30th June



**Halesowen C of E
Primary School**

YEAR GROUP

6

Choose 1 maths activity a day

Order these decimals from smallest to largest. 0.202, 0.45, 2.1, 2.09, 2.009	Order these values from smallest to largest. 0.2, 3/10, 2/5, 0.25, 11/100	Complete the maths questions. (page 3)
---	--	---

Choose 1 English activity a day

Look at the picture of the shed –page 3. Make a bank of 20 words to describe it.	Look at page 3. In 10 words write what the wizard would say when you enter the shed. Make it	Write a playscript of the opening scene between the wizard and the character entering
--	--	---

Choose 1 topic activity a day

Science Create a wordsearch using scientific vocabulary. (Template on next page) Adaptation, evolution, genetics, features, environment,	Science Explain how the woolly mammoth was adapted to live in it's environment. (use the website below to help you)	Science Create an animal that lives in an extremely hot environment. Explain how its features help it to survive.
---	---	--

Practise these skills everyday this week

Read aloud to someone in your house.	Practice your time table facts. You can use TTRS to help.	Practice your year group spellings -(See spellingframe website below)
--------------------------------------	---	---

Practise these skills as often as you can.

Food and drink skills Prepare/cook a meal . (Adult supervision)	Write up an essential shopping list to a certain budget. Use supermarket online sites to add prices	Help to wash and fold the laundry.
--	--	------------------------------------

Useful website links for extending learning

Using Direct speech: https://www.bbc.co.uk/bitesize/topics/zr6bxyc/articles/	Tips for writing a playscript: https://www.bbc.co.uk/bitesize/topics/zsn4h39/articles/
https://spellingframe.co.uk/	Woolly mammoth : https://kids.nationalgeographic.com/animals/prehistoric-animals/woolly-mammoth/

Maths Questions

7a. Alesha and Lucy are comparing fractions.



Alesha

I think that 0.625 is greater.



Lucy

I think that $\frac{3}{8}$ is greater.

Who is correct. Explain how you know.



R

7b. Sean and Johnny are comparing fractions.



Alfie

I think that 0.6 is greater.



Johnny

I think that $\frac{12}{20}$ is greater.

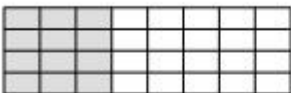
Who is correct. Explain how you know



R

8a. Convert the fractions into decimals and write them in descending order.

A



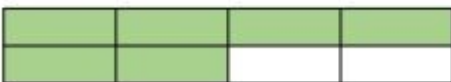
B

$$\frac{5}{8}$$

C

$$\frac{10}{16}$$

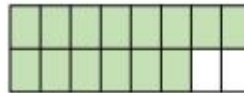
D



PS

8b. Convert the fractions into decimals and write them in ascending order.

A



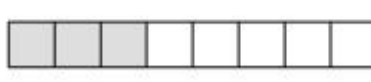
B

$$\frac{12}{16}$$

C

$$\frac{4}{5}$$

D



PS

9a. I am thinking of a fraction.

- It can be simplified.
- When converted to a decimal, it has 3 decimal places.
- The numerator is a multiple of 4.
- The denominator is between 27 and 32.

What is my fraction?
What is this fraction as a decimal?



PS

9b. I am thinking of a fraction.

- It can be simplified.
- The denominator is a multiple of 4 less than 20.
- When converted to a decimal, it is a number with only 2 decimal places.

What is my fraction?
What is this fraction as a decimal?



PS

There is a wizard in my potting shed

Imagine you discover this 'shed' at the bottom of your garden, What is inside? I can imagine it's magical inside, much bigger than it seems on the outside. Perhaps lit by candles, strange instruments on the tables, cobwebbed and dusty. Behind you the door closes gently and you espy this man sat in emerald green robes, peering at you over his glasses, the candles flicker and die out. It's pitch black and he whispers....



Word Search

Create a word search using your own words list.

Write your word list here:

DATE

Wednesday 1st July



**Halesowen C of E
Primary School**

YEAR GROUP

6

Choose 1 maths activity a day

Which fraction is the smallest? Largest? 3/4 2/4 1/2 1/4 2/2	Find the equivalent percentages to these fractions. Then put them in size order. 3/4, 2/5, 4/12, 9/10, 8/16	Complete the questions on page 2.
---	---	-----------------------------------

Choose 1 English activity a day

Find the meaning of the following words. Tunic, mast, merchant, myths, conquer, runes.	Read the extract on page 3 and answer the quick questions.	Watch the short film and complete the task on page 4.
---	--	---

Choose 1 topic activity a day

History- Predict what the artefacts on page 2 are and what they are used for.	History- Research historical artefacts used by the Vikings.	History- Find out about Viking towns and the historical aspects about them.
--	--	--

Practise these skills everyday this week

Read aloud to someone in your house.	Practice your time table facts. You can use TTRS to help.	Practice your year group spellings -(See spelling frame website below)
--------------------------------------	---	--

Practise these skills as often as you can.

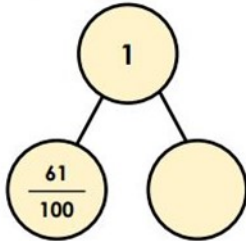
Food and drink skills Prepare/cook a meal . (Adult supervision)	Write up an essential shopping list to a certain budget. Use supermarket online sites to add prices	Help to wash and fold the laundry.
--	--	------------------------------------

Useful website links for extending learning

Viking artefacts https://www.jorvikvikingcentre.co.uk/about/jorvik-artefact-	Maths– fraction, percentages, decimals https://nrich.maths.org/8707
https://spellingframe.co.uk/	https://www.thesaurus.com/

Maths Questions

Complete the part-whole diagram.
Give the missing value as a percentage.

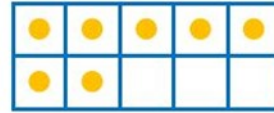


FLUENCY 2

Jane is using a Numicon hundred board.
What fraction and percentage is being represented?



What fraction of the tens frame is filled?
What is this as a percentage?



FLUENCY 4

Match the fractions to the equivalent percentages.

50.7%

57%

5.7%

$\frac{57}{100}$

$\frac{507}{1000}$

$\frac{57}{1000}$

Reading Tasks

The Viking Times

We Have Arrived!

AD787

4 After an arduous journey
9 across the North Sea, we
13 have finally reached our
15 destination – England.
18 The feeble, afraid
21 Englishmen tried to
26 cease us but we were
30 too powerful and fought
35 our way, as brutally as
39 was necessary, onto the
43 green and lush land.



48 We are here to find
51 treasures (and probably
55 steal them) before we
60 return to our homes in
63 Norway, Sweden and
64 Denmark.

70 Our first raid was of the
73 monastery at Lindisfarne,
78 which was not very well

81 protected and contained
85 valuable goods like gold
88 and jewels, imported
92 foods and other useful
95 materials for trade.

99 England is more pleasant
103 and lucrative than we
104 thought!

Quick Questions



1. Which word means 'stop'?



2. Where did the Vikings come from?



3. Find two adjectives which are antonyms of each other.

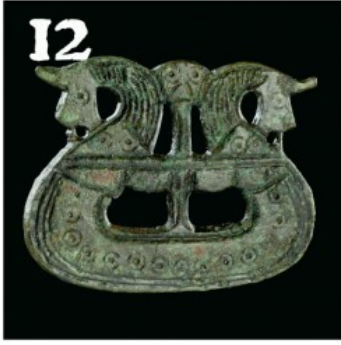


4. How does the Viking's view of England change?

Reading task—Video link

Watch the following video called The Alchemist. Can you design 10 questions about the film? Make sure you include inference style questions. Remember these are questions which need to be backed up with evidence when answered.

<https://www.literacyshed.com/the-almchemists-letter.html>



DATE

Thursday 2nd July



**Halesowen C of E
Primary School**

YEAR GROUP

6

Choose 1 maths activity a day

Find 10 more and 10 less of these numbers: 598, 402, 354, 199	Order the following amounts- 33%, 1/3, 0.33, 0.26, 25%, 1/5	Have a go at the maths questions on page 2.
--	--	---

Choose 1 English activity a day

Write 5 sentences to describe what the Viking looks like on page 3.	Watch the Viking village video (page 3) Write down 9 sentences (one from each FANTASTIC's that goes with the video.).	Watch the Viking video (page 3). Write what will happen next as an opposing Anglo-Saxon team enter the camp.
---	---	--

Choose 1 topic activity a day

Wellbeing Create a Viking exercise regime and share with your family.	Wellbeing- Create a Viking dance.	Wellbeing- Write a food diary for 2 days and highlight what Vikings would have eaten.
--	--------------------------------------	--

Practise these skills everyday this week

Read aloud to someone in your house.	Practice your time table facts. You can use TTRS to help.	Practice your year group spellings -(See spelling frame website below)
--------------------------------------	---	--

Practise these skills as often as you can.

Food and drink skills Prepare/cook a meal . (Adult supervision)	Write up an essential shopping list to a certain budget. Use supermarket online sites to add prices	Help to wash and fold the laundry.
--	--	------------------------------------

Useful website links for extending learning

Reading/wellbeing https://literacytrust.org.uk/family-zone/9-12/book-hopes/	
https://spellingframe.co.uk/	https://www.thesaurus.com/

Maths Questions

FLUENCY 1

Write the place value counters as a decimal, fraction and percentage.

FLUENCY 3

Place the following in ascending order:

$\frac{9}{10}$ 60% 0.08 0.75 30% $\frac{3}{100}$

FLUENCY 2

Match up the equivalent fraction, decimal and percentages.

$\frac{1}{3}$	40%	33%	$\frac{3}{300}$	0.4
	0.1	$\frac{2}{5}$		
10%	1%	0.01	$\frac{2}{20}$	$0.\dot{3}\dot{3}$

FLUENCY 4

Caleb has won a raffle and has a choice of prizes?



- 20% of £50
- $\frac{2}{10}$ £250
- 0.8 of £10



Which one should he choose?

Picture Writing Prompt



Video Writing Prompt

<https://www.literacyshed.com/vikingvillage.html>

F	○	Feeling
A	○	Asking
N	☹	Noticing
T	✋	Touching
A	👁	Action
S	👃	Smelling
T	👅	Tasting
I	🌀	Imagining
C	○	Checking

DATE

Friday 3rd July



**Halesowen C of E
Primary School**

YEAR GROUP

6

Choose 1 maths activity a day

Double and half these numbers:

- 46
- 93
- 78
- 254
- 125

Find a solution. You can only use the numbers once



Have a go at the maths problem solving activity page 2.

Choose 1 English activity a day

Design and make a bookmark for your best friend. Maybe you could drop it off at their doorstep on your daily walk?

Answer the questions about the **picture** on page 2:

- 1) How did that person end up falling?
- 2) Who is holding on?
- 3) Where are they?
- 4) How do they know each other?

Answer the questions about the **extract** on page 2

Choose 1 topic activity a day

Art and Design- Design a piece of Viking Jewellery.

Art and Design- Design a piece of Viking Jewellery Annotate and label.

Art and Design- Design a piece of Viking Jewellery Write about your jewellery for a museum.

Practise these skills everyday this week

Read aloud to someone in your house.

Practice your time table facts. You can use TTRS to help.

Practice your year group spellings -(See spelling frame web-site below)

Practise these skills as often as you can.

Food and drink skills
Prepare/cook a meal .
(Adult supervision)

Write up an essential shopping list to a certain budget.
Use supermarket online sites to add prices

Help to wash and fold the laundry.

Useful website links for extending learning

Viking artefacts

<https://www.jorvikvikingcentre.co.uk/about/jorvik-artefact-gallery/>

<https://spellingframe.co.uk/>

Maths– fraction, percentages, decimals

<https://nrich.maths.org/8707>

<https://www.thesaurus.com/>

Maths Questions

PROBLEM SOLVING 1

Using only the digits given, how many fraction, decimal and percentage equivalences can you create?

You can use each digit a maximum of three times.



$$\frac{\quad}{\quad} = \quad \% = 0.$$

Reading Task Resources

Picture

F ○ Feeling

A ○ Asking

N ○ Noticing

T ○ Touching

A ○ Action

S ○ Smelling

T ○ Tasting

I ○ Imagining

C ○ Checking



Reading Extract

Matilda Pages pushed open the door of Pages & Co. and breathed in deeply, taking in the familiar scent of just-blown-out candles, dark chocolate and, of course, books. For a second she forgot that she was splattered with muddy water and simply relished the week's holiday that stretched out in front of her like the view from the gate of a fairground. But the bubble of calm popped as the damp seeped through her tights, making her shiver, and she marched through the door connecting the bookshop to the narrow house she lived in with her grandparents. She let the door crash behind her, tossed her school bag on the table – accidentally sending a pile of potatoes flying – and flopped dramatically into a chair.

She paused, waiting for her grandmother to react, and when Grandma finally turned, Tilly flung her head theatrically on to her arms on the table. 'Happy half-term, Tilly,' Grandma said, looking around in confusion. 'What on earth is the matter? And why are you taking it out on the potatoes?' Tilly blushed and sheepishly started picking them up.

And you're soaking – it's not still raining, is it?' Grandma said, peering out of the kitchen window.

She gave her granddaughter's head an affectionate rub as Tilly knelt to rescue a stray potato that had rolled into the cat basket. Tilly sighed and leaned against Grandma's legs. 'Grace went through a puddle on her bike and it splashed all over me.' 'Surely she didn't do it on purpose?' Grandma asked gently. Tilly harrumphed in disagreement.

'Aren't you two as thick as thieves?' Grandma said. 'That was before, when we were just little. She has new friends now,' Tilly said. 'She got on to the netball team, and only wants to be with those girls now. She sits with Ammara and Poppy every day.' 'Have I met Ammara and Poppy?' Grandma asked. 'No, they went to St Enid's, and they stick together all the time.' 'Well, why don't you invite some of them round during the holiday?' Grandma suggested. 'Get to know each other?' 'I don't think they'd come,' Tilly said uncertainly. 'They're always whispering and giggling about something when I try to talk to them.' 'They might surprise you. You don't know if you don't ask,' Grandma said. 'Be brave, Matilda. Be brave, be—' 'Be brave, be curious, be kind,' Tilly interrupted. 'I know.'

Extract from 'Pages & Co. Tilly and the Book Wanderers' by Anna James

Questions:

1. What 3 things did Tilly smell when she entered the bookshop?
2. Who did Tilly live with?
3. How did Tilly get soaked?
4. What does '*as thick as thieves*' mean?
5. Why did Tilly blush when Grandma asked her what was the matter?
6. What does '*harrumphed*' mean?
7. What is Grandma's advice to Tilly? Do you agree with it? Why?